

11+ Acres, Custom Home



12660 SW McAlpin Place, Beaverton, Oregon

When you own the land, you control your future. The UGB is around the corner from this 11 acre parcel. Built in 1985 the custom designed home takes full advantage of the setting. 3 Bedroom 2 bath main house with a 1 bedroom 1 bath self contained attached apt. Barn, RV & 3 parking bays, wall of windows, vaulted ceilings. The land is gently sloped. Privacy at the end of the road.

Virtual Tour: www.obeo.com/Public/Viewer/Default.aspx?ID=386143

\$625,000

Features:

- 4 Bedrooms, 3 Full Baths
- Vaulted Great Room with woodstove
- Large room sizes!
- Skylights & ceiling fans
- Covered deck
- 15' x 100' sunny garden space
- Double-car garage with opener, plus carport and covered RV parking
- AHS Home Warranty
- Heat Pump, FA Electric Heat, Electric Hot Water
- Approx. 2535 Sq. Ft., \$4018 Property Tax
- Schools: Groner, Thomas, Hillsboro HS



SH Steve Heuser, P.C.

Experience the Steve Heuser Higher Standard™

Broker, CRS, GRI, e-PRO, SFR
RE/MAX Hall of Fame
direct: 503.495.3259 / cell: 503.680.1768
email: Steve@SteveHeuser.com
www.SteveHeuser.com

RMLS#: 10000950 T/G#: 654/C4



RE/MAX
equity group, inc.

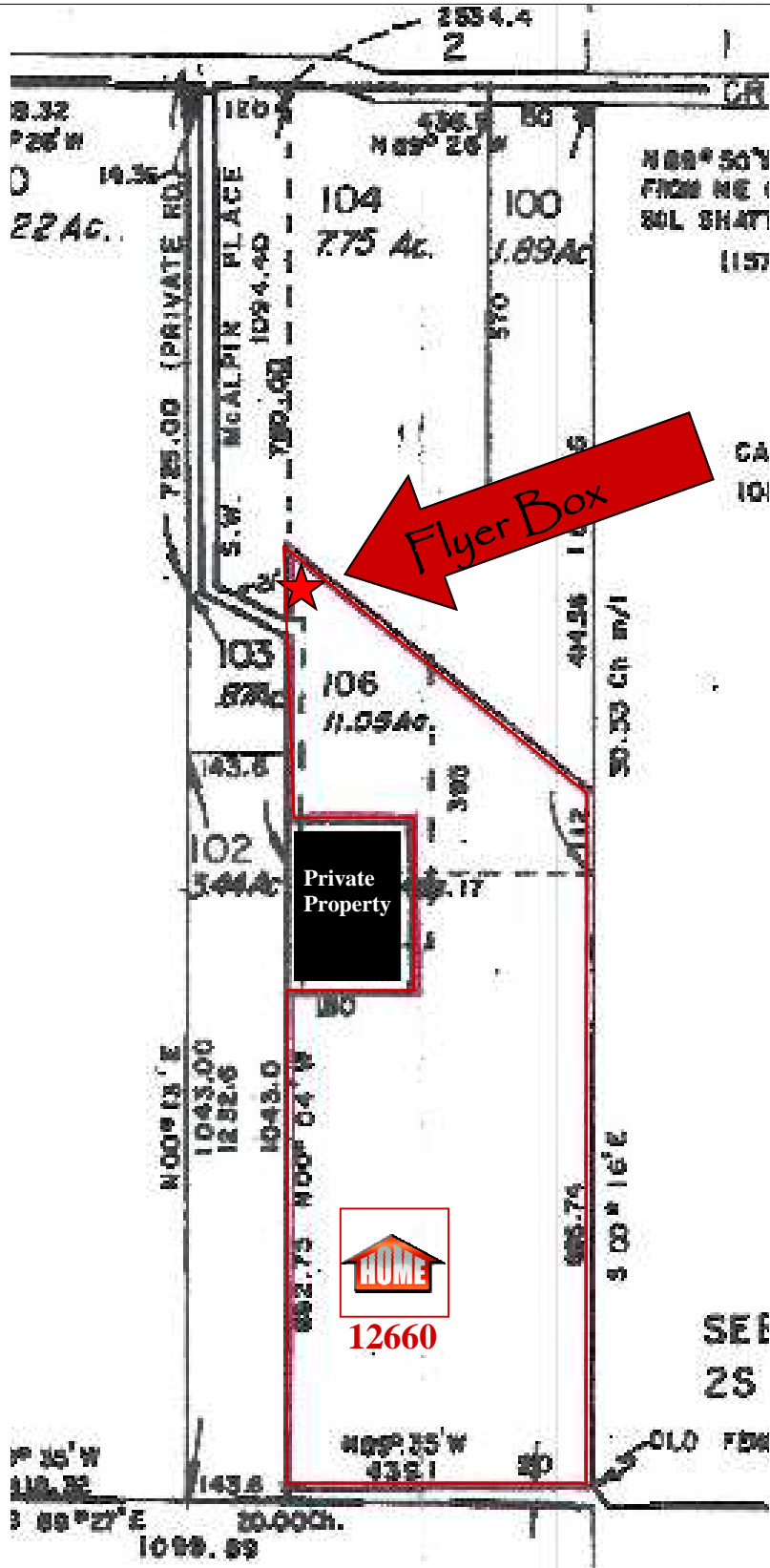
Each office independently owned and operated

More info at: steveheuser.com/listings/12660swMcAlpinPlace

Information is deemed reliable but is not guaranteed.

12660 SW McAlpin Place Beaverton, Oregon

P
l
a
t
t
M
a
p



P
l
a
t
t
M
a
p